

Anticooperativity in diffusion-controlled reactions with pairs of anisotropic domains: a model for the antigen-antibody encounter

F. Piazza¹, P. De Los Rios¹, D. Fanelli^{2,3}, L. Bongini³, U. Skoglund³

¹ Laboratoire de Biophysique Statistique, SB-ITP, École Polytechnique Fédérale de Lausanne, BSP-720, CH-1015 Lausanne, Switzerland, e-mail: Francesco.Piazza@epfl.ch

² Dipartimento di Energetica “S. Stecco”, Università di Firenze, Via S. Marta 3, 50139, Firenze, Italy

³ Department of Cell and Molecular Biology, Karolinska Institutet, 171 77 Stockholm, Sweden

Received: / Revised version:

Contents

1	Introduction	2
2	Modeling the antigen-antibody encounter	5
3	The mathematical formulation	7
4	Encounter rate for two entirely absorbing Fabs	12
5	Encounter rate for two partially absorbing Fabs	15
6	Discussion	20
A	24
B	25
C	26

Send offprint requests to: F. Piazza
Correspondence to: F. Piazza

Abstract The encounter between anisotropic agents in diffusion-controlled reactions is a topic of very general relevance in chemistry and biology. Here we introduce a simplified model of encounter of an isotropic molecule with a pair of partially reacting agents and apply it to the encounter reaction between an antibody and its antigen. We reduce the problem to the solution of dual series relations (DSR), which can be solved iteratively, yielding the exact solution for the encounter rate constant at any desired order of accuracy.

We quantify the encounter effectiveness by means of a simple indicator and show that the two binding centers systematically behave in an anticooperative fashion. However, we demonstrate that a reduction of the binding active sites allows the composite molecule to recover binding effectiveness, in spite of the overall reduction of the rate constant. In addition, we provide a simple formula that enables one to calculate the anticooperativity as a function of the size of the binding site for any values of the separation between the two active lobes and of the antigen size.

Finally, some biological implications of our results are discussed.

Key words Diffusion-controlled reactions Encounter rate constant anisotropic reactants Anticooperativity Antibodies

PACS: 82.37.-j, 82.39.Rt, 87.15.Vv, 02.60.Lj

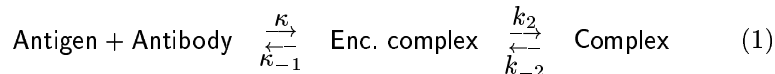
1 Introduction

The study of reactions and binding between anisotropic macromolecules is an issue at the core of molecular biology. Among the former processes, the binding between foreign agents of different nature (antigens) and antibodies in higher organisms is an example of the utmost relevance. The unexpected presence of intruder organisms, such as viruses or bacteria, may trigger fast immunological responses of different kind, by rapidly letting B cells develop high concentrations of antibodies of the relevant family in the specific tissue or in the blood.

Antibodies are large molecules of about 150 kDa. Their structure, common to all families, consists of three large domains, joined in the central, flexible region of the molecule and relatively free to move with respect to each other. In Fig. 1 we show a tridimensional reconstruction at 2 nm resolution of a murine antibody IgG by means of Cryo-electron Tomography [1]. The two identical upper large lobes are known as antigen-binding (Fab) arms, while the lower, slightly flatter structure is known as the Fc fragment (so called because it is readily crystallized). The tips of the Fab fragments contain the active sites: these are the loci where the binding with a given antigen takes place. The aminoacid sequence of the two identical active regions is hyper-variable, and is the result of a complex process involving both somatic recombination and selective gene splicing during B cell differentiation [2]. This allows a single organism to have at its disposal a huge variety

of antibody molecules which are almost identical as for their structure and dynamics, while targeting an enormous number of different external agents.

The most general mechanism of antigen–antibody binding can be represented as a two–step reaction of the kind



The first, reversible reaction describes the encounter between an antigen and an antibody *in vivo*. This process is driven by diffusion. Interestingly, it has been recently proved that the dynamics of large–scale motions of the antibody plays a crucial role in determining the encounter rate κ [3, 4]. The following stage of the reaction describes the chemical fixation of the antigen–antibody complex. That is, for example, where the (unknown) chemical binding affinity enters the play.

The calculation of the encounter rate constant ¹ κ in a simple encounter process of the type $A+B \rightarrow AB$ has been first performed in 1916 by Smoluchowski under the hypothesis of chemically isotropic reactants [5]. In a first approximation, he treated the two reacting species A and B as spheres of radius R_1 and R_2 with reactivity homogeneously distributed over their surface. In this case one obtains the Smoluchowski encounter rate constant

$$\kappa_s = 4\pi DR \quad (2)$$

where $D = D_1 + D_2$ is the coefficient of relative diffusion and $R = R_1 + R_2$ is the encounter distance.

In reactions of the type (1), it is often assumed that the second stage proceeds faster with respect to the characteristic time scales of separation of the unreacted encounter pair. In this case, the overall process will be rate–limited by diffusion, and the overall rate of the reaction will equal the encounter rate. For example, this conclusion may be expected to hold more and more true for antigens of larger and larger size. If that is not the case, one also needs both the rate of dissociation of the unreacted complex and the rate of fixation of the antigen–antibody complex in order to compare with the experimental rates. However, it is at present still unclear whether the formation of the stable antigen–antibody complex is always a *diffusion–controlled* reaction [6]. As a matter of fact, experimental measurements of the rate constants in solution for immunological systems including proteins as antigens reported values 10^{-4} times smaller than expected from the theory of diffusion [7,8,9], thus suggesting that the process should be better modeled as an activation–controlled reaction. Furthermore, measurements at the liquid–solid interface show conflicting results, reporting values only 10 times smaller than the theoretical estimates [6] as well as of the same order of the values measured in solution [10]. Importantly, however, all these

¹ A *rate constant* in a second–order reaction between two species A and B that is first order in ρ_A and first order in ρ_B is usually expressed in $\text{M}^{-1} \text{s}^{-1}$ or, equivalently, $\text{mol dm}^3 \text{s}^{-1}$

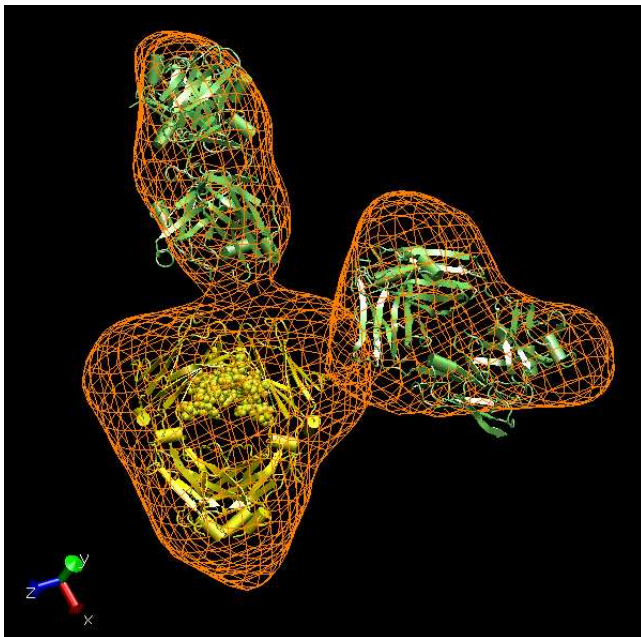


Figure 1 Pseudo atomic model of a murine IgG reconstructed by Cryo-electron Tomography. The (modified) crystal structure (green Fab, yellow Fc) is shown docked into the tomograms (orange wire frames). Copyright (2004) National Academy of Sciences, U.S.A..

estimates have been compared with the simple Smoluchowski theory (2), by treating antibodies as uniformly absorbing spheres of given radius. In general, however, chemical reactions usually display strongly anisotropic behaviour, and antibodies are no exception. It appears therefore important to quantify the reduction in the encounter rate due to steric effects within the framework of a simple but realistic model.

Mathematically, reactions between anisotropic agents are described by mixed boundary value problems, for which exact solutions can be found only in some simple cases. A number of approximate solutions extending the simple theory of Smoluchowski have been later worked out by many authors to study a variety of problems of diffusion-controlled reactions between a chemically isotropic sphere and a chemically anisotropic one, whose surface is only partially allowed to react [11]. Theoretical calculations have also been compared to and integrated with a variety of simulations, ranging from standard methods such as Brownian dynamics [12] to more refined tools, such as numerical algorithms to study reactions in biomolecular systems using the equations of continuum mechanics [13].

Quite unintuitively, it has been established that the encounter rate scales as the linear dimension of the absorbing region. An exact solution of the mixed boundary value problem for an axially symmetric circular absorbing

patch has been given by Traytak, by using the formalism of dual series relations (DSR) [14]. Surprisingly enough, by comparing the approximate solutions to the same problem available in the literature, he found out that very good agreement with the exact solution was displayed by the simple formula $\kappa_{\Delta S} = \kappa_S \sqrt{\Delta S/S}$, where $\Delta S/S$ is the absorbing fraction of the surface of one sphere.

In this paper, we follow the DSR approach to calculate the stationary encounter rate constant between a chemically isotropic sphere (the antigen) and a pair of anisotropic spheres with given absorbing surface fraction (the Fabs), placed at a given distance. This model can be regarded as the simplest approximation of the encounter process between an antibody and a foreign agent. Yet, it allows to study quantitatively the reduction of the encounter rate arising from steric effects, and compare with the reduction found in the experiments. Moreover, our model will help elucidate an important feature common to many diffusion-driven reactions in chemistry and biology, namely the effect of anticooperativity. Given a spheric antigen, two absorbing Fabs will always display an encounter rate greater than that of a single absorbing Fab with the same radius, but smaller than twice as much that.

Quite generally, we can imagine that the reduction in the encounter effectiveness caused by the presence of two reacting sites is counterbalanced by advantages of different nature specific to the same arrangement. In other words, we think of the action of nature during evolution as promoting trade-offs between competing selective pressures. In the present case, for example, the reduction of antigen-antibody encounter rate might be recovered as an increase in binding strength in presence of two-Fab binding to large antigens (such as proteins on the surface of virus capsids) or polymerization of antigen-antibody complexes [2]. It is therefore important to characterize the effect of anticooperativity as a function of the parameters which describe the geometry of the system.

2 Modeling the antigen-antibody encounter

Before embarking in the formulation and solution of our mathematical model, let us briefly sketch the outline of our work and anticipate the main results as a guide to the reader through the paper.

Our aim is to model the two-site absorbing system which constitutes the chasing apparatus of an antibody (see pictorial representation in Fig. 2). Two are the key parameters: the active surface fraction on each Fab's tip and the Fab-Fab distance d . If we approximate each Fab arm as a sphere, the size of the active site may be expressed in terms of an angular aperture measured from its centre. While the latter is a geometrical parameter, the Fab-Fab distance is a dynamical quantity, given the high flexibility of the antibody. As a consequence, the average reactivity of the system will be the result of the statistical superposition of all configurations, each weighted

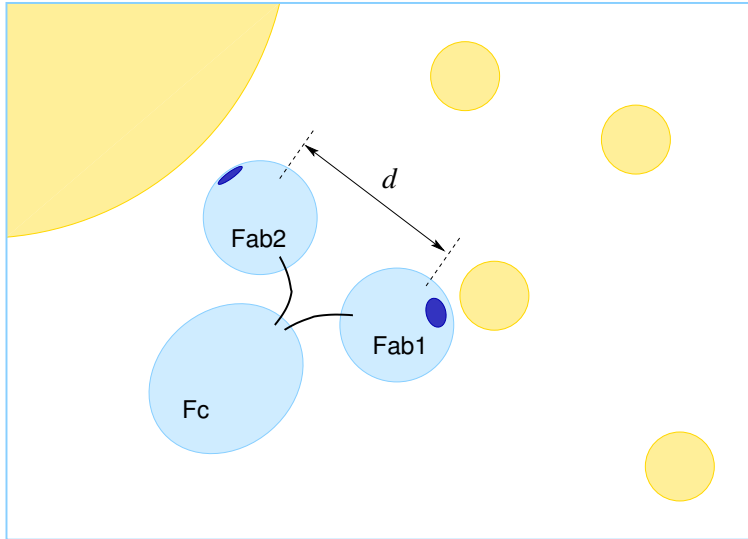


Figure 2 Schematic view of an antibody facing encounter with antigens of different size. Relative dimensions of the objects roughly reproduce the realistic proportions. The smallest spheres may represent small target proteins as the ones relevant for the present analysis. The dark blue patches on the Fabs' outer surfaces represent the binding active sites.

according to its thermodynamical weight. However, for small, highly mobile antigens (roughly up to the size of a Fab), the system may be characterized by the average Fab-Fab distance and all reaction indicators may be regarded in this regime as static ones. For the sake of simplicity, the forthcoming discussion is carried out under these conditions.

The main concern of this paper is to provide a quantitative characterization of the encounter efficiency of a simplified two-Fab system. For this purpose, we formulate an essential mathematical model, which is described in section 3. We look for solutions in the case of spherical Fabs with axially symmetric active patches pointing toward opposite directions (see also Fig. 3). This is a reasonable guess that captures the nature of the average patch-patch relative orientation. Clearly, a realistic antibody will adopt conformations that deviate from this guess. However, the main results of our analysis will not be substantially modified for small deviations from the axially symmetric geometry.

In section 4, we solve the model under the hypothesis of large active sites. We show that the two objects systematically act in an *anticooperative* fashion, thereby proving that the two-Fab geometry of antibodies sacrifice encounter effectiveness to the possible alternative strategy of twice as much single-Fab agents. If κ and κ_1 indicate the rate of the composite and single-centre systems, respectively, we show that for small antigens of radius R

one has

$$\frac{\kappa}{2\kappa_1} \approx 1 - \left(\frac{R_F + R}{d} \right)$$

where R_F is the Fab radius. The message is that, although some encounter effectiveness is lost with two-Fab antibodies with respect to twice as much imaginary single-centre ones ($\kappa < 2\kappa_1$), part of it may be regained by letting the molecule keep the active centres the farthest apart (see Fig. 2). This conclusion fits nicely within the reconstruction of the IgG dynamics reported recently by the authors [4], where an antibody has been shown to display a statistical preference for *open* configurations. A simple indicator that measures anticooperativity is introduced at this level of the discussion.

We then move in sections 5 and 5.1 to study the effects of reducing the size of the binding sites. By solving our simplified model, we shall provide quantitative evidence that the anticooperative effect is reduced in molecules with two highly anisotropic binding domains. This conclusion can be grasped intuitively by thinking to anticooperativity as arising because each Fab *shields* some antigen flux away from its neighbour. This result suggests that the reduction of the anticooperative effect brought about by the unavoidable high binding anisotropy may have positively biased nature toward two-Fab antibodies. From a mathematical point of view, we are able to cast this effect in simple terms by an effective description. That is embodied in formula (46).

We stress that the final result of our calculations enables to estimate the absolute value of the antigen-antibody encounter rate, provided a sensible estimate of the binding areas is known. However, the latter is difficult to evaluate - indeed it probably constitutes matter for a dedicated study on its own right.

3 The mathematical formulation

We are interested in studying the encounter rate of a pair of identical Fab arms with an antigen of given size. In the simplest approximation, we neglect the contribution of the non-reacting Fc stem and assume isotropic antigens. We thus model the Immunoglobulin as a pair of partially reacting spheres and the antigen as a uniformly reacting sphere. Let \mathcal{S}_1 represent the isotropic antigen of radius R_1 , and $\mathcal{S}_2^+, \mathcal{S}_2^-$ indicate the pair of Fab spheres of radius R_2 . Let \mathbf{R}^\pm indicate the position vectors of the Fab spheres and \mathbf{R}_a the position vector of the antigen. The diffusion equation then takes the following form

$$\begin{aligned} \frac{\partial P(\mathbf{R}^\pm, \mathbf{R}_a, t)}{\partial t} &= D_1 \nabla_{R_a}^2 P(\mathbf{R}^\pm, \mathbf{R}_a, t) \\ &+ D_2 [\nabla_{R^+}^2 + \nabla_{R^-}^2] P(\mathbf{R}^\pm, \mathbf{R}_a, t) \end{aligned} \quad (3)$$

where D_1 is the diffusion coefficient of the antigen and D_2 that of a Fab sphere.

In the following we shall neglect time-dependent effects. We thus restrict ourselves to finding the stationary solution of Eq. (3) with the proper choice of boundary conditions. This means that our result will describe with greater accuracy the limit of antigens small with respect to the Fab arms. Let us perform the following coordinate transformation

$$\begin{cases} \mathbf{R}_G = \sqrt{\frac{2D_1}{D_2}} \left(\frac{\mathbf{R}^+ + \mathbf{R}^-}{2} \right) + \sqrt{\frac{D_2}{2D_1}} \mathbf{R}_a \\ \mathbf{d} = \mathbf{R}^+ - \mathbf{R}^- \\ \mathbf{r} = \mathbf{R}_a - \left(\frac{\mathbf{R}^+ + \mathbf{R}^-}{2} \right) \end{cases} \quad (4)$$

The vector \mathbf{R}_G describes the “diffusional” center of mass of the system composed by the pair of Fabs and the antigen, \mathbf{d} is the relative position of one Fab with respect to the other, and \mathbf{r} is the relative position of the antigen with respect to the center of mass of the two Fab system (clearly a distance $|\mathbf{d}|/2$ away from each Fab along \mathbf{d}). The constraint $d = |\mathbf{d}| = \text{const.}$ is assumed. As a result of the transformation (4), the stationary diffusion equation becomes

$$D^* \nabla_{\mathbf{R}_G}^2 P(\mathbf{R}_G, \mathbf{r}, \mathbf{d}) + D^* \nabla_{\mathbf{r}}^2 P(\mathbf{R}_G, \mathbf{r}, \mathbf{d}) + 2D \nabla_{\mathbf{d}}^2 P(\mathbf{R}_G, \mathbf{r}, \mathbf{d}) = 0 \quad (5)$$

where $D^* = (D_1 + D_2/2)$. We observe that the last operator in Eq. (5) is a purely angular one, as a result of the constraint $d = \text{const.}$

Eq. (5) can be considered as describing three independent diffusion processes, one in the coordinate \mathbf{R}_G (translational diffusion of the whole system), one in the coordinate \mathbf{r} (translational diffusion of the antigen with respect to the antibody), and one in the coordinate \mathbf{d} (rotational diffusion of the two Fab spheres on the sphere centered in their barycenter). Thus the distribution function P may be factorized as $P(\mathbf{R}_G, \mathbf{r}, \mathbf{d}) = \mathcal{P}(\mathbf{R}_G) c(\mathbf{r}) p(\mathbf{d})$. If one disregards the diffusion along the coordinate \mathbf{R}_G , the relevant remaining relative motion is governed by the following equation

$$D^* \left[\frac{\nabla_{\mathbf{r}}^2 c(\mathbf{r})}{c(\mathbf{r})} \right] + 2D_2 \left[\frac{\nabla_{\mathbf{d}}^2 p(\mathbf{d})}{p(\mathbf{d})} \right] = 0 \quad (6)$$

The two terms in Eq. (6) must be constant. In particular they must be equal to the same quantity. However, there are no boundary conditions to be imposed on the rotational diffusion of the two Fabs on the spherical surface centered in their center of mass with radius $d/2$. This means that the function $p(\mathbf{d})$ must have s symmetry and hence $p(\mathbf{d}) = 1/4\pi$. We are then left with a Laplace problem of the form $\nabla^2 c(\mathbf{r}) = 0$, with the proper set of mixed boundary conditions which describe the anisotropy of the antigen-antibody encounter.

The reaction between an antigen and a Fab takes place on the given active surface fraction of either sphere \mathcal{S}^\pm of radius R , concentric with \mathcal{S}_2^\pm (see Fig. 3). The rest of the surface of both Fabs is taken to be reflecting.

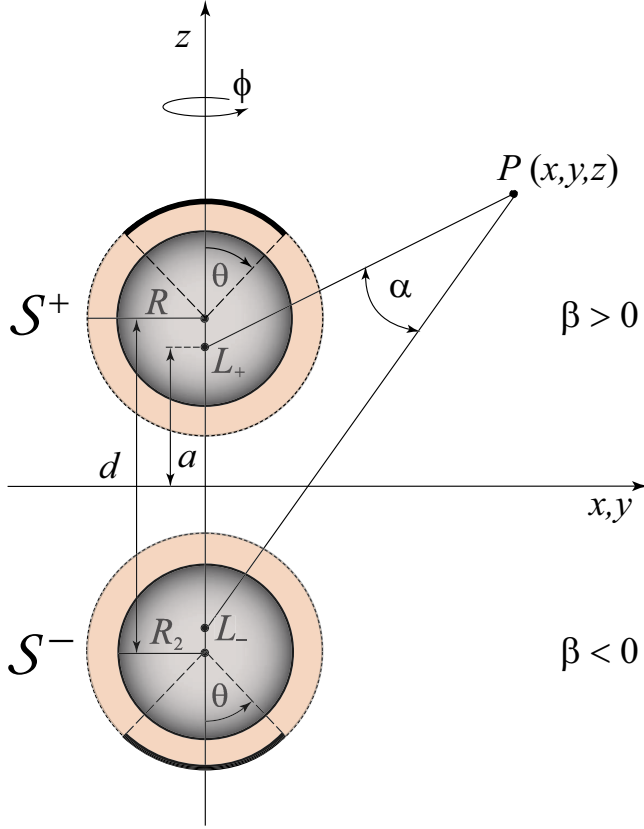


Figure 3 The system of bispherical coordinates β, α, ϕ . Shown are sections of the two reacting spheres S^\pm with their absorbing patches.

Under these hypotheses, our task is to solve the following mixed boundary value Laplace problem for the concentration of antigens $c(\mathbf{r})$

$$\begin{aligned}
 \nabla^2 c(\mathbf{r}) &= 0 \\
 c|_{\Omega_+} &= c|_{\Omega_-} = 0 \\
 \vec{\nabla} c \cdot \hat{n}_+|_{\hat{\Omega}_+} &= \vec{\nabla} c \cdot \hat{n}_-|_{\hat{\Omega}_-} = 0 \\
 \lim_{r \rightarrow \infty} c(\mathbf{r}) &= c_\infty
 \end{aligned} \tag{7}$$

where Ω_\pm denote the absorbing fractions of the spheres S^\pm , \hat{n}_\pm the outward normals to their surfaces, $\hat{\Omega}_\pm$ the complementary reflecting surface fractions and c_∞ the bulk concentration of the antigens.

Laplace equation is known to be separable in many coordinate systems [15]. The nature of the problem at hand suggests the use of the bi-

spherical coordinate set, defined by the three variables (β, α, ϕ) (Fig. 3)

$$\begin{aligned}\beta &= -\log\left(\frac{PL_+}{PL_-}\right) && \text{with } -\infty < \beta < \infty \\ \alpha &= (\widehat{L-PL_+}) && \text{with } 0 \leq \alpha \leq \pi \quad .\end{aligned}\quad (8)$$

The azimuthal angle ϕ is chosen such that $\phi = 0$ if P belongs to the x axis ($0 \leq \phi \leq 2\pi$). Bispherical coordinates are related to Cartesian coordinates through the following transformations

$$\begin{aligned}x &= \frac{a \sin \alpha \cos \phi}{\cosh \beta - \cos \alpha} \\ y &= \frac{a \sin \alpha \sin \phi}{\cosh \beta - \cos \alpha} \\ z &= \frac{a \sinh \beta}{\cosh \beta - \cos \alpha} \quad .\end{aligned}\quad (9)$$

The parameter a is fixed by the distance d between the centers of the absorbing spheres and by their radius R . In our case, we have

$$a = R\sqrt{\chi^2 - 1} \quad (10)$$

with $\chi = d/2R > 1$. The two poles ($\beta \rightarrow \pm\infty$) are located on the z axis at the points L_+ and L_- (see Fig. 3), at a distance a from the plane $z = 0$. The surfaces $\beta = \beta_0 = \text{const.}$ are spheres of radius $a \operatorname{cosech} |\beta_0|$, whose centers are located on the z axis at $z = \pm \coth \beta_0$. The surface $\beta = 0$ is a sphere of infinite radius with center at $(x = y = 0, z = \pm\infty)$, which includes the plane $z = 0$. In particular, the two reaction spheres \mathcal{S}^\pm are defined as $\beta = \pm\beta_0$, with

$$\beta_0 = \log \left[\chi + \sqrt{\chi^2 - 1} \right] \quad . \quad (11)$$

From expression (11) the following two identities can be straightforwardly derived

$$\cosh \beta_0 = \chi \quad \sinh \beta_0 = \sqrt{\chi^2 - 1} \quad . \quad (12)$$

The absorbing surface fractions of the spheres \mathcal{S}^\pm are defined as circular patches of given angular aperture $\theta = \theta_0$, θ being the latitude measured from the north (\mathcal{S}^+) and south (\mathcal{S}^-) pole of the reacting spheres (see Fig. 3),

$$\begin{aligned}\Omega_+ &= (\beta = \beta_0, 0 \leq \alpha \leq \alpha_0, 0 \leq \phi \leq 2\pi) \\ \Omega_- &= (\beta = -\beta_0, 0 \leq \alpha \leq \alpha_0, 0 \leq \phi \leq 2\pi)\end{aligned}\quad (13)$$

where

$$\alpha_0 = \arccos \left[\frac{\chi \sin^2 \theta_0 + (\chi^2 - 1) \cos \theta_0}{\chi^2 - \cos^2 \theta_0} \right] \quad . \quad (14)$$

We note that the parameters a and β_0 completely describe the geometry of the problem. All of the space is divided into three parts: that within sphere \mathcal{S}^+ ($\beta > \beta_0$), that within \mathcal{S}^- ($\beta < -\beta_0$), and that outside of both spheres ($-\beta_0 < \beta < \beta_0$).

As a final remark, we observe that the limits $r \rightarrow 0$ and $r \rightarrow \infty$ are obtained in bispherical coordinates by letting $(\beta \rightarrow 0, \alpha \rightarrow \pi)$ and $(\beta \rightarrow 0, \alpha \rightarrow 0)$, respectively.

3.1 Laplace equation in bispherical coordinates

The most general solution to the Laplace equation in bispherical coordinates in a problem with azimuthal symmetry satisfying the last condition of Eqs. (7) can be written as [15]

$$\rho(\beta, \alpha) = 1 - \sqrt{\cosh \beta - \cos \alpha} \times \sum_{n=0}^{\infty} \left(A_n e^{(n+\frac{1}{2})\beta} + B_n e^{-(n+\frac{1}{2})\beta} \right) P_n(\cos \alpha) \quad (15)$$

where $P_n(\cos \alpha)$ are the Legendre polynomials, and we have introduced the normalized concentration $\rho = c/c_\infty$.

Once the constants A_n and B_n have been determined by imposing the first three conditions contained in Eqs. (7), the calculation of the encounter rate constant can be performed by evaluating the flux Φ of the concentration (15) on any surface enclosing the two sinks Ω_\pm . Since we are assuming homogeneous bulk concentration of the antigens, the rate calculated at any orientation of the vector \mathbf{d} must give the same result. Therefore, a sensible choice for the calculation of the rate is to take the flux across the very spheres $\beta = \pm\beta_0$. Letting κ be the rate constant of encounters between a spherical antigen and the two sphere system with given absorbing fraction, we can write

$$\kappa = D^* \Phi(\rho) = D^* \left[\int_{\Omega_+ \cup \hat{\Omega}_+} \vec{\nabla} \rho \cdot \hat{n}_+ dS + \int_{\Omega_- \cup \hat{\Omega}_-} \vec{\nabla} \rho \cdot \hat{n}_- dS \right] \quad (16)$$

The above choice of the integration surface allows the expression of the flux to be cast in a simple form, by noting that $\hat{n}_\pm = \mp \hat{u}_\beta$, where \hat{u}_β is the unit vector perpendicular to the surfaces $\beta = \text{const}$. We have

$$\kappa = D^* \left[- \int_{\Omega_+ \cup \hat{\Omega}_+} [\nabla \rho(\beta_0, \alpha)]_\beta dS + \int_{\Omega_- \cup \hat{\Omega}_-} [\nabla \rho(-\beta_0, \alpha)]_\beta dS \right] \quad (17)$$

where

$$[\nabla \rho(\pm\beta_0, \alpha)]_\beta = \left(\frac{\cosh \beta_0 - \cos \alpha}{a} \right) \frac{\partial \rho}{\partial \beta} \Big|_{\pm\beta_0} \quad (18)$$

is the β component of the gradient of the concentration ρ evaluated on the spherical surfaces $\beta = \pm\beta_0$.

The infinitesimal surface element dS can be calculated in a simple fashion by parametrizing the surfaces $\beta = \pm\beta_0$ as $\boldsymbol{\psi}(u, v) : \mathbb{U} \rightarrow \mathbb{R}_2$, $\mathbb{U} \subset \mathbb{R}_2$ with the choice $(u, v) = (\alpha, \phi)$, $\mathbb{U} = [0, \pi] \cup [0, 2\pi]$. In this case, we have

$$dS = |\partial_u \boldsymbol{\psi} \wedge \partial_v \boldsymbol{\psi}| du dv = \frac{a^2 \sin u}{(\cosh \beta_0 - \cos u)^2} du dv \quad . \quad (19)$$

By inserting Eqs. (18) and (19) into expression (17) the integration over ϕ can be performed straightforwardly. We get

$$\kappa = -2\pi D^* a \int_0^\pi \left(\left. \frac{\partial \rho}{\partial \beta} \right|_{\beta_0} - \left. \frac{\partial \rho}{\partial \beta} \right|_{-\beta_0} \right) \frac{\sin \alpha}{\cosh \beta_0 - \cos \alpha} d\alpha \quad . \quad (20)$$

4 Encounter rate for two entirely absorbing Fabs

In this section we shall work out the encounter rate for the case of two entirely absorbing Fabs ($\theta_0 = \alpha_0 = \pi$). We have a single boundary value problem to solve now, namely

$$\begin{aligned} \nabla^2 c(\mathbf{r}) &= 0 \\ c|_{S^+} &= c|_{S^-} = 0 \\ \lim_{r \rightarrow \infty} c(\mathbf{r}) &= c_\infty \quad . \end{aligned} \quad (21)$$

In order to develop the calculations, it is useful to introduce the following identity [15]

$$\frac{1}{\sqrt{\cosh \beta - \cos \alpha}} = \sqrt{2} \sum_{n=0}^{\infty} e^{-(n+\frac{1}{2})|\beta|} P_n(\cos \alpha) \quad (22)$$

where $P_n(\cos \alpha)$ are Legendre polynomials. The unknown coefficients A_n and B_n in the general expression (15) can be determined by imposing the second condition from Eqs. (21). If we take into account expression (22) and invoke the uniqueness of development in series of Legendre polynomials, we get the following algebraic system,

$$\begin{cases} A_n e^{(2n+1)\beta_0} + B_n = \sqrt{2} \\ A_n + B_n e^{(2n+1)\beta_0} = \sqrt{2} \end{cases} \quad (23)$$

whose solutions are easily found to be

$$A_n = B_n = \frac{1}{\sqrt{2}} \frac{e^{-(n+\frac{1}{2})\beta_0}}{\cosh [(n+\frac{1}{2})\beta_0]} \quad . \quad (24)$$

If we substitute back the above expression for the coefficients in Eq. (15), we obtain the normalized solution of the Laplace problem (21):

$$\rho(\beta, \alpha) = 1 - \sqrt{2} \sqrt{\cosh \beta - \cos \alpha} \times \sum_{n=0}^{\infty} \frac{\cosh \left[\left(n + \frac{1}{2} \right) \beta \right]}{\cosh \left[\left(n + \frac{1}{2} \right) \beta_0 \right]} e^{-(n+\frac{1}{2})\beta_0} P_n(\cos \alpha). \quad (25)$$

The encounter rate constant can now be calculated by using formula (20). The details of the calculations are reported in Appendix A. We obtain

$$\kappa = 2\kappa_s \sqrt{\chi^2 - 1} \sum_{n=0}^{\infty} \frac{2}{1 + \left[\chi + \sqrt{\chi^2 - 1} \right]^{2n+1}} \quad (26)$$

where $\chi = d/2R$ and $\kappa_s = 4\pi D^* R$ is the Smoluchowski rate constant describing the encounter of an antigen and a single Fab with diffusion coefficient $D_2/2$.

For large values of the parameter χ , a careful calculation allows to develop expression (26). To first order in $1/\chi$, we obtain

$$\begin{aligned} \kappa &= 2\kappa_s \left(1 - \frac{1}{2\chi} \right) \\ &= 2\kappa_s \left(1 - \frac{R}{d} \right) . \end{aligned} \quad (27)$$

In the limit of infinite separation between the two Fabs, we have

$$\lim_{\chi \rightarrow \infty} \kappa = 2\kappa_s \quad (28)$$

and we recover additivity of two non-interacting absorbing spheres. We observe that, as a result of our formulation, in the limit $d \rightarrow \infty$ the relative motion of the antigen and the Fabs is still described by the sum of the diffusion coefficient of the antigen D_1 and that of the two Fab system $D_2/2$.

In the opposite limit $\chi \rightarrow 1$, i.e. when the two reacting spheres \mathcal{S}^\pm are brought in contact, the rate (26) can be evaluated analytically by letting $\chi = \cosh \delta$. We have

$$\begin{aligned} \lim_{\chi \rightarrow 1} \frac{\kappa}{2\kappa_s} &= \lim_{\delta \rightarrow 0} \sum_{n=0}^{\infty} \frac{2\delta \Delta n}{1 + e^{(2n+1)\delta}} \\ &= \int_0^\infty \frac{dx}{1 + e^x} = \log 2 . \end{aligned} \quad (29)$$

Numerical calculation of κ through Eq. (26) shows that the approximation (27) is accurate within about 2 % for values of χ as small as $\chi \approx 4$.

Expression (26) describes the encounter between a spherical antigen and two entirely absorbing Fabs a distance d apart. The rate constant κ of such

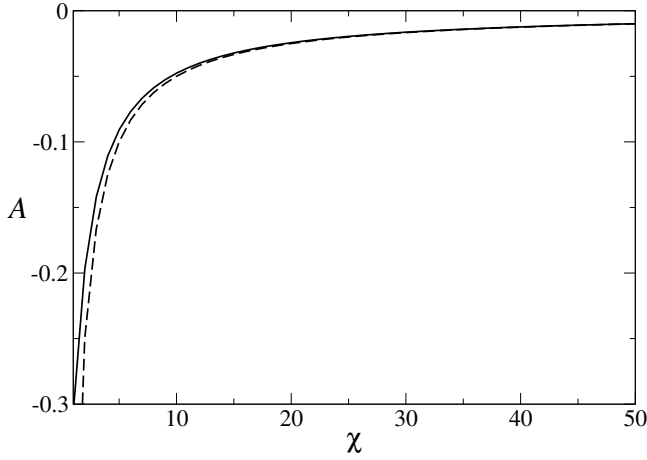


Figure 4 Anticooperativity indicator \mathcal{A} as a function of χ for a system of two entirely absorbing spherical Fabs. The solid line is a numerical calculation through Eq. (26). The dashed line is a plot of the first-order approximation using Eq. (27).

reaction is always smaller than $2\kappa_S$, which amounts to say that the two Fabs behave in an *anticooperative* fashion. The physical reason for such a behavior is that, for any finite value of d , the two Fab spheres partially screen each other out a finite portion of the flux of incoming antigens. A quantitative measure of the anticooperativity can be obtained by defining the simple function

$$\mathcal{A} = \frac{\kappa}{2\kappa_1} - 1 \quad (30)$$

where $\kappa_1 = 4\pi(D_1 + D_2)(R_1 + R_2)$ is the Smoluchowski rate constant describing the encounter of the antigen with a single, isolated Fab sphere. If we use the Einstein rule $D_i \propto 1/R_i$, $i = 1, 2$, the anticooperativity function can be written as

$$\mathcal{A} = \frac{1}{2} \left(\frac{2 + \xi}{1 + \xi} \right) \frac{\kappa}{2\kappa_S} - 1 \quad (31)$$

where $\xi = R_1/R_2$ is the antigen-to-antibody size ratio.

The quantity \mathcal{A} is a monotonously decreasing function of the antigen radius R_1 for fixed Fab-Fab separation d , and a monotonously increasing function of d at fixed R_1 (see Fig. 4). This means that the configurations of the IgG with the largest Fab-Fab distances will be characterized by the smallest values of anticooperativity. In the formal limit of infinite separation between active centers $d \rightarrow \infty$, additivity is nearly recovered. For small antigens

$$\lim_{d \rightarrow \infty} \mathcal{A}(\chi) = -\frac{\xi}{1 + \xi} \ll 1 \quad .$$

Of course, additivity is exactly recovered only formally in the limit $\xi \rightarrow 0$.

In the opposite limit $\chi \rightarrow 1$, anticooperativity attains its maximum. In this case $\lim_{\chi \rightarrow 1} \kappa = 2\kappa_S \log 2$, and hence

$$\lim_{\chi \rightarrow 1} \mathcal{A}(\chi) = \frac{1}{2} \left(\frac{2 + \xi}{1 + \xi} \right) \log 2 - 1$$

We see that for antigens as small as $\xi = 0.1$, $\lim_{\chi \rightarrow 1} \mathcal{A} \approx 0.95 \log 2 - 1 \approx -0.34$. This means that two entirely absorbing Fabs may loose as much as 35 % of their combined encounter effectiveness, when they happen to be very close to each other.

5 Encounter rate for two partially absorbing Fabs

We turn now to a more realistic case, where we allow for only a given fraction of the surface of either Fab to be active, according to Eqs. (13) and (14). The rest of the surface is taken as reflecting. As a consequence, we are faced with the full mixed boundary value problem (7).

Substitution of Eq. (15) in the second and third equations from the problem (7), with the help of identity (22), leads to the following dual series relations

$$\sum_{n=0}^{\infty} \left(A_n \cosh \left[\left(n + \frac{1}{2} \right) \beta_0 \right] - q_n \right) P_n(\cos \alpha) = 0 \quad \text{for } 0 < \alpha < \alpha_0 \quad (32)$$

$$\begin{aligned} & \sum_{n=0}^{\infty} (2n+1) A_n \sinh \left[\left(n + \frac{1}{2} \right) \beta_0 \right] P_n(\cos \alpha) + \frac{\sinh \beta_0}{\cosh \beta_0 - \cos \alpha} \\ & \times \sum_{n=0}^{\infty} A_n \cosh \left[\left(n + \frac{1}{2} \right) \beta_0 \right] P_n(\cos \alpha) = 0 \quad \text{for } \alpha_0 < \alpha < \pi \quad (33) \end{aligned}$$

where α_0 is given by Eq. (14), $B_n = A_n$ and

$$q_n = \frac{1}{\sqrt{2}} e^{-(n+\frac{1}{2})\beta_0} \quad . \quad (34)$$

The DSR (32) and (33) can be reduced to a form solvable by iteration through the definition of new unknown coefficients X_n

$$X_n = A_n \cosh \left[\left(n + \frac{1}{2} \right) \beta_0 \right] - q_n \quad . \quad (35)$$

After some elementary algebra, the DSR (32) and (33) can be rearranged in the following fashion

$$\begin{cases} \sum_{n=0}^{\infty} X_n P_n(\cos \alpha) = 0 & \text{for } 0 \leq \alpha \leq \alpha_0 \\ \sum_{n=0}^{\infty} (2n+1) X_n P_n(\cos \alpha) = G(\alpha) & \text{for } \alpha_0 < \alpha \leq \pi \end{cases} \quad (36)$$

where

$$G(\alpha) = \sum_{n=0}^{\infty} (2n+1) \left\{ X_n - (q_n + X_n) \tanh \left[\left(n + \frac{1}{2} \right) \beta_0 \right] \right\} P_n(\cos \alpha) - \frac{\sinh \beta_0}{\cosh \beta_0 - \cos \alpha} \sum_{n=0}^{\infty} (q_n + X_n) P_n(\cos \alpha) \quad . \quad (37)$$

It may be shown that a pair of DSR of the form (36) have the exact² solution [16]

$$X_n = \frac{1}{\pi\sqrt{2}} \int_{\alpha_0}^{\pi} \cos \left[\left(n + \frac{1}{2} \right) u \right] G_0^*(u) du \quad (38)$$

with

$$G_0^*(u) = \int_u^{\pi} \frac{G(\alpha) \sin \alpha}{\sqrt{\cos u - \cos \alpha}} d\alpha \quad . \quad (39)$$

Using formula (38) and recalling the definition of β_0 Eq. (11), we get after a somewhat lengthy calculation the following infinite set of linear equations (see appendix B for the details)

$$X_n - \sum_{m=0}^{\infty} M_{nm} X_m = \sum_{m=0}^{\infty} (M_{nm} - S_{nm}) q_m \quad (40)$$

where the matrices S and M are given by

$$S_{nm} = \frac{1}{\pi} \left\{ (\pi - \alpha_0) \delta_{nm} - \frac{\sin[(n-m)\alpha_0]}{n-m} (1 - \delta_{nm}) \frac{\sin[(n+m+1)\alpha_0]}{n+m+1} \right\}$$

$$M_{nm} = \frac{2S_{nm}}{1 + \left[\chi + \sqrt{\chi^2 - 1} \right]^{2m+1}} - \sqrt{\chi^2 - 1} \sum_{k=0}^{\infty} \Gamma_{nk} S_{km} \quad (41)$$

with

$$\Gamma_{mn} = P_m(\chi) Q_n(\chi) \Theta(n-m) + P_n(\chi) Q_m(\chi) \Theta(m-n) \quad (42)$$

Q_n being Legendre polynomials of the second kind and $\Theta(x)$ the Heaviside step function defined such as $\Theta(0) = 1/2$.

The set of equations (40) may be solved numerically by truncation. Fortunately, the norm of the matrix M is less than unity for all values of θ_0 and χ (see Fig. 5) and thus the procedure converges rapidly to a fixed point (see appendix C for more details). Once the coefficients X_n have been determined for a given choice of θ_0 and χ , the rate may be calculated through formula (20). Recalling the definition (35), we get

$$\kappa = 2\kappa_s \sqrt{\chi^2 - 1} \sum_{n=0}^{\infty} \left[1 + \frac{X_n}{q_n} \right] \frac{2}{1 + \left[\chi + \sqrt{\chi^2 - 1} \right]^{2n+1}} \quad . \quad (43)$$

² We note that in ref. [16], Eq. (38) has the wrong sign on the righthand side.

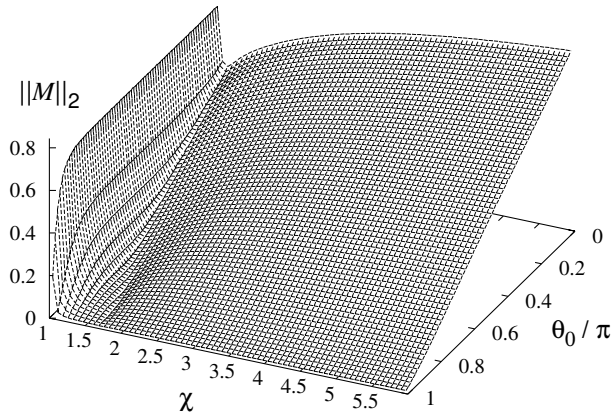


Figure 5 Surface plot of the spectral norm of matrix M as a function of the angular aperture of the absorbing patches θ_0 and of parameter $\chi = d/2R$.

5.1 Anticooperativity of two partially absorbing Fabs

We have seen that, if only a portion of the whole surface of the sinks is allowed to react, the rate constant is reduced accordingly. Such reduction in the encounter rate is usually quantified through computation of the so-called *steric factor*, defined as

$$f = \frac{\kappa(\theta_0)}{\kappa(\pi)} . \quad (44)$$

A very narrow angular aperture of the two active sites will result in a vanishing f , while the value $f = 1$ will be approached when the system is everywhere reactive.

Of course, the steric factor of a pair of patched spheres will depend on the value of the parameter $\chi = d/2R$. For example, the reduction in the encounter rate constant with antigens of size R caused by restricting the active site to a given aperture θ_0 will be different at different values of the Fab–Fab separation d . In Fig. 6 we plot the function $f(\theta_0)$ for $\chi = 1.1$ and $\chi = 2.0$. These values approximately describe the two interesting limiting cases of (i) Fabs close to each other ($\chi = 1.1$) and (ii) Fabs placed at maximum separation ($\chi = 2.0$). The latter condition roughly corresponds to the case where d approaches the diameter of the IgG molecule.

Our results clearly show that the encounter rate is greater the smaller is χ (see in particular inset in Fig. 6). This fact has a two-fold interpretation. One one hand, it means that the anisotropic system, characterized by a given active site, is more and more effective the larger is the antigen. This

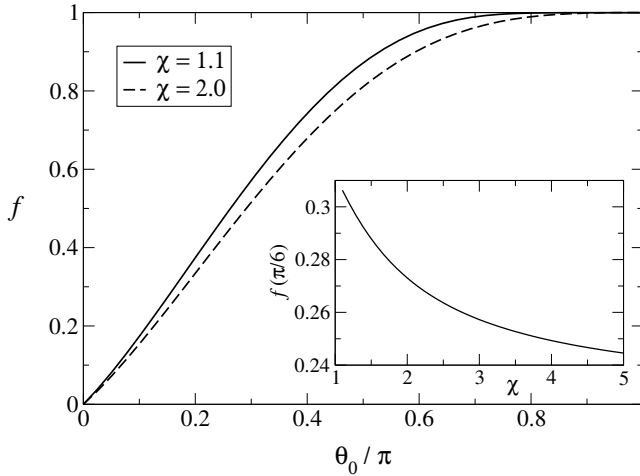


Figure 6 Plot of the steric factor f vs angular aperture of the active regions for two values of the parameter χ . In the inset we show the dependence of f upon χ for $\theta_0 = \pi/6$.

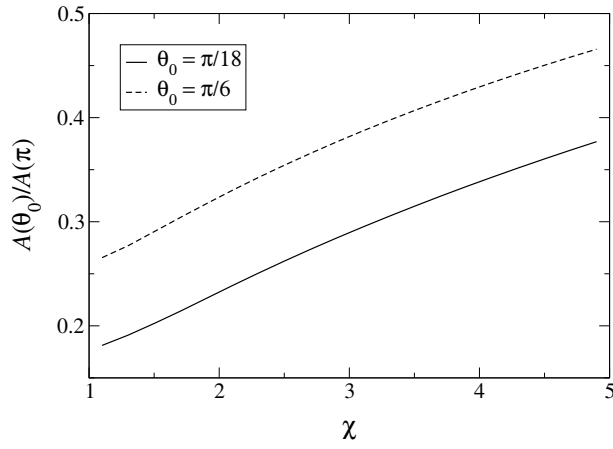
is the obvious conclusion that holds also in the simple fully reactive arrangement. However, this result also means that the rate of the anisotropic agent increases (with respect to its isotropic analog) by bringing the two active domains closer (i.e. by decreasing d).

This effect can be further investigated by introducing the anticooperativity function for the system of two partially reacting Fabs. This will be a function of θ_0 , namely

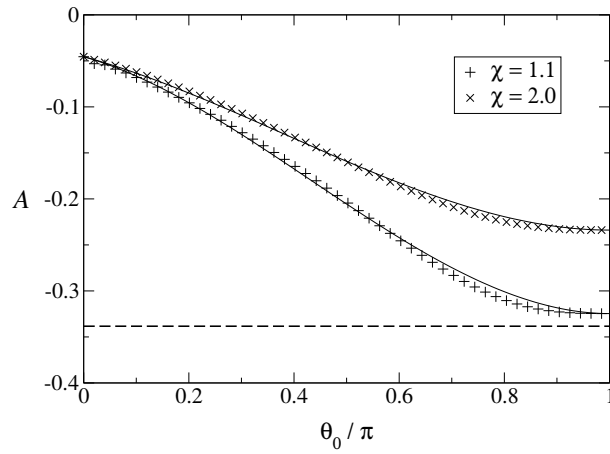
$$\begin{aligned} \mathcal{A}(\theta_0) &= \frac{\kappa(\theta_0)}{2\kappa_1(\theta_0)} - 1 \\ &= \frac{1}{2} \left(\frac{2 + \xi}{1 + \xi} \right) \frac{f(\theta_0)}{f_1(\theta_0)} - 1 \end{aligned} \quad (45)$$

where $\kappa(\theta_0) = 2\kappa_S f(\theta_0)$ is given by Eq. (43), $\xi = R_1/R_2$ and $\kappa_1(\theta_0) = 4\pi(D_1 + D_2)(R_1 + R_2)f_1(\theta_0)$ is the encounter rate for an isolated sphere with an active region of angular size θ_0 . The latter can be calculated exactly through the DSR approach analogously to what reported in this paper. Such solution has first been published by Traytak [14].

It is evident from Fig. 7 (a) that the anisotropic system behaves in a less anticooperative fashion, which is consistent with the results reported in Fig. 6. In particular, this effect is more and more marked for smaller and smaller active sites. In Fig. 7 (b) we report the exact calculation of $\mathcal{A}(\theta_0)$ for the two geometries $\chi = 1.1$ and $\chi = 2.0$ and a reasonable value of the antigen-to-Fab size ratio $\xi = 0.1$. The value attained at $\theta_0 = \pi$ is the anticooperativity of two entirely active Fabs. Our results show that the effect of reducing the reaction region is to reduce the anticooperative behaviour. Put differently, when the active site is very small, the negative



(a)



(b)

Figure 7 (a) Ratio between the anticooperativity of the anisotropic system and that of the fully reactive arrangement vs χ for two values of the patch aperture θ_0 . (b) Plot of the anticooperativity function (45) vs angular aperture for $\xi = 0.1$. Symbols are the exact solution (43), calculated by truncating Eqs. (40) at $N = 100$. The solid lines are one-parameter fits with the empirical expression (46). The best fit values of the free parameter are: $\lambda = -0.164 \pm 0.003$ ($\chi = 1$), $\lambda = -0.156 \pm 0.002$ ($\chi = 2$). The horizontal dashed line marks the maximum of anticooperativity attained by the fully absorbing system in the limit $\chi \rightarrow 1$, namely $[(2 + \xi)/2(1 + \xi)] \log 2 - 1$.

interference between the two active lobes is maximally reduced. This effect surprisingly increases monotonously with decreasing θ_0 . Figs. 7 (a) and (b) summarize the main result of our analysis.

Unfortunately it is not possible to cast the function (45) in a simple analytical form. However, it turns out that a simple third-order polynomial with only one free coefficient fits the exact solution extremely well in the whole domain $[0, \pi]$. The three conditions that fix all the other coefficients are:

1. From the numerical calculations it is clear that the steric factors $f(\theta_0)$ and $f_1(\theta_0)$ vanish linearly for $\theta_0 \rightarrow 0$ with the same slope. This fixes the zero coefficient.

$$\mathcal{A}_0 = \mathcal{A}(0) = \frac{1}{2} \left(\frac{2 + \xi}{1 + \xi} \right) - 1$$

2. The anticooperativity at $\theta_0 = \pi$ must be given by formula (30), which gives the condition

$$\begin{aligned} \mathcal{A}(\pi) = \mathcal{A}_\pi \stackrel{\text{def}}{=} & \frac{1}{2} \left(\frac{2 + \xi}{1 + \xi} \right) \sqrt{\chi^2 - 1} \\ & \times \sum_{n=0}^{\infty} \frac{2}{1 + [\chi + \sqrt{\chi^2 - 1}]^{2n+1}} - 1 \end{aligned}$$

3. The function $\mathcal{A}(\theta_0)$ must approach the value \mathcal{A}_π with slope zero, since both steric factors $f(\theta_0)$ and $f_1(\theta_0)$ do so. Again, it is easy to convince oneself of the latter conditions from the numerics.

If we indicate with λ the free first-order coefficient, and work out the three above conditions, the empirical one-parameter polynomial anticooperativity takes the form

$$\mathcal{A}_e(\theta_0) = \mathcal{A}_0 + \lambda \left(\frac{\theta_0}{\pi} \right) - (2\lambda - 3\Delta\mathcal{A}) \left(\frac{\theta_0}{\pi} \right)^2 + (\lambda - 2\Delta\mathcal{A}) \left(\frac{\theta_0}{\pi} \right)^3 \quad (46)$$

where $\Delta\mathcal{A} = \mathcal{A}_\pi - \mathcal{A}_0$.

The result of a fit with the function (46) is shown in Fig. 7 for two values of χ . Despite its simple form, it shows to interpolate the exact result extremely well. Accordingly, this approximation may be used at all interesting values of χ . The best-fit values of the parameter λ turn out to vary linearly with χ (see Fig. 8) as $\lambda \approx -0.176 + 0.011\chi$. Finally, this result prescribes which value of λ should be used in formula (46) if one wishes to compute the anticooperativity at a given value of χ .

6 Discussion

In this paper we have derived an explicit formula that allows the steric factor of a molecule composed of two anisotropic binding domains to be calculated

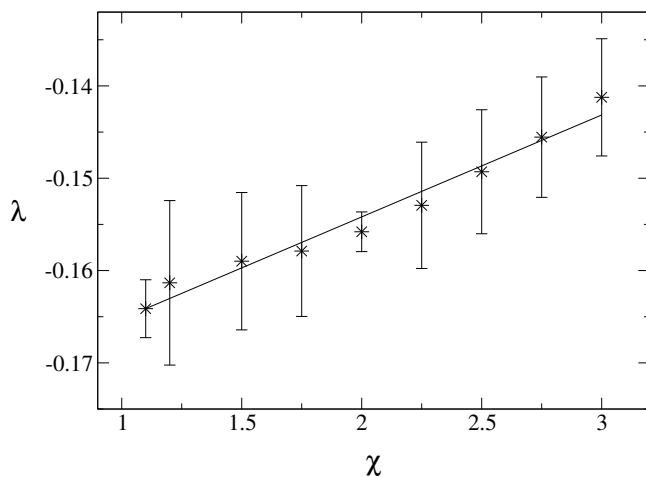


Figure 8 Best-fit values of λ from the fits of the exact anticooperativity with the empirical function (46) vs χ (symbols). The solid line is the linear fit reported in the text.

as a function of the relevant geometrical parameters. As a case-study, we have applied our treatment to the process of encounter between an antibody and a small antigen.

On the basis of our results, we hint that a reduction of a factor 10^4 with respect to the Smoluchowski theory as reported experimentally, if confirmed by more recent work, cannot be justified within the framework of a reaction with an isotropic antigen. The inclusion in our model of anisotropy of the second reactant along the strategy reported in [11] will be the subject of future research. However, due to the discrepancies in the results reported in the literature, we believe that further accurate experimental work is required.

Moreover, our model allows to show that a further effect naturally arises in a two-sites system, namely anticooperativity of the two binding centers. We have quantified such effect by reducing the complex mathematical problem to a simple approximate one-parameter formula that can be employed generically. An important result of our analysis is that the anisotropic system is less anticooperative as compared to the fully active arrangement. This effect is more pronounced for small sizes of the active sites.

As to the example of antibodies, it is also interesting to discuss our results from the point of view of evolution. As observed in the introduction, we may imagine that nature has eventually come to antibodies with (i) two, (ii) partially-active domains as a result of a trade-off among contrasting selective pressures. As a consequence, one possible way to look at the binding properties of simple models of such molecules is to highlight those features which seem to minimize the shortcomings from such compromise. Correspondingly, these may be identified as (i) the buffering effect from an-

ticooperativity of two binding arms and (ii) the reduction of the binding rate arising from reduction of the active site.

Immunoglobulins with two binding lobes encounter more antigens than hypothetical single-domain analogs. Moreover, two binding arms may bind with increased strength on the surface of the same large antigen (as e.g. with proteins on the surfaces of viruses' capsids). However, we have shown that there exists an anticooperative effect due to mutual disturbance between binding domains. We have quantified such negative interference by introducing a simple anticooperativity function. This behaves in a sensible fashion - it decreases (less disturbance) when the two Fabs are farther apart for a given antigen size, or when the size of the antigen decreases for a fixed value of the Fab-Fab separation. Both situations correspond to $\chi = d/2R > 1$. On the contrary, mutual hindrance becomes important when the two Fabs come close to one another, or when the antigen size increases, resulting in a reduction of the encounter rate of as much as 30 %. This is the regime $\chi \rightarrow 1$.

The crucial feature of antibodies is their high specificity for antigen binding. Very generally, it is legitimate to speculate that this kind of constraint acted during evolution as an important selective pressure toward the formation of active sites of limited size. However, as a consequence of localization of specific areas, the encounter effectiveness of an antibody is also strongly weakened. In this paper, we have shown that a reduction of the active regions also lessens the effects of mutual disturbance between Fabs. Therefore, if we think to the actual size of the binding sites as the end point of an adaptive evolutionary pathway toward maximization of the encounter effectiveness for a wide class of antigens, the above effect might well have acted as an additional selective pressure against other constraints competing toward the enlargement of the specific target zones. For example, one may mention that the cost of maintaining two binding arms per antibody in terms of peptide synthesis must be higher than if antibodies were single-domain (possibly fully reactive) agents.

It is interesting to observe that the recovered binding effectiveness due to reduction of anticooperativity is higher the smaller is the active site (see again Fig. 7). But this is also the regime where the absolute reduction in the binding rate is higher. The negative correlation between these two effects (smaller rate but also smaller anticooperativity) well fits into the picture of antibodies as "flexible" chasers, whereby such molecules are deployed for a wide class of antigen sizes. In fact, it has recently been established that the regions in the Fab tips where the contacts with antigens are made strongly vary in size depending on the size of the antigen [17,18]. Quite generally, antigens may be divided into three categories: proteins (large), peptides (intermediate) and haptens (small). While the contacts involved in binding a protein extend over a wide region on the Fab terminal region, the binding site for a small hapten is buried within a narrow crevice, making its angular aperture extremely small (of the order of a few degrees).

As a final remark, we remind the reader that the configuration of our complex reacting arrangement is fixed (in a sort of *handle* configuration). Thus, we are not taking into account explicitly dynamical effects associated with the relative motion of the two Fabs, which makes our results valid in the limit of small antigens. The link of the present results with the knowledge accumulated on the dynamics of the antibody molecules [4] will be the subject of future research.

We wish to thank three anonymous referees for their useful comments.

A

In this appendix we illustrate the calculations leading to the expression (26).

Insertion of Eq. (25) into the general expression for the rate (20) leads to the following equation

$$\kappa = 4\pi Da \sum_{n=0}^{\infty} e^{-(n+\frac{1}{2})\beta_0} \times \left\{ \sinh \beta_0 \mathcal{I}_{3/2}(n) + (2n+1) \tanh \left[\left(n + \frac{1}{2} \right) \beta_0 \right] \mathcal{I}_{1/2}(n) \right\} \quad (47)$$

where

$$\mathcal{I}_p(n) = \frac{1}{\sqrt{2}} \int_0^\pi \frac{\sin \alpha P_n(\cos \alpha)}{[\cosh \beta_0 - \cos \alpha]^p} d\alpha \quad . \quad (48)$$

The integral $\mathcal{I}_{1/2}(n)$ can be calculated by recalling identity (22). We obtain

$$\begin{aligned} \mathcal{I}_{1/2}(n) &= \sqrt{2} \sum_{m=0}^{\infty} e^{-(m+\frac{1}{2})\beta_0} I_{nm} \\ &= \frac{2\sqrt{2}}{2n+1} e^{-(n+\frac{1}{2})\beta_0} \end{aligned} \quad (49)$$

where we have made use of the orthonormality of Legendre polynomials,

$$I_{nm} = \int_0^\pi P_n(\cos \alpha) P_m(\cos \alpha) \sin \alpha d\alpha = \frac{2}{2n+1} \delta_{n,m} \quad . \quad (50)$$

The integral $\mathcal{I}_{3/2}(n)$ can be easily calculated by noting that

$$\begin{aligned} \mathcal{I}_{3/2}(n) &= - \left(\frac{2}{\sinh \beta_0} \right) \frac{\partial \mathcal{I}_{1/2}(n)}{\partial \beta_0} \\ &= \frac{2\sqrt{2}}{\sinh \beta_0} e^{-(n+\frac{1}{2})\beta_0} \quad . \end{aligned} \quad (51)$$

Insertion of Eqs. (49) and (51) into expression (47) leads to

$$\kappa = 8\pi Da \sum_{n=0}^{\infty} e^{-(2n+1)\beta_0} \left\{ 1 + \tanh \left[\left(n + \frac{1}{2} \right) \beta_0 \right] \right\} \quad . \quad (52)$$

Finally, the expression for the rate constant (26) is recovered by substituting into Eq. (52) the definitions of a and β_0 , Eqs. (10) and (11).

B

Insertion of expression (37) in Eq. (39) leads to the following equation

$$G_0^*(u) = \sum_{n=0}^{\infty} (2n+1) \left\{ X_n - (q_n + X_n) \tanh \left[\left(n + \frac{1}{2} \right) \beta_0 \right] \right\} \mathcal{I}_n(u) - \sinh \beta_0 \sum_{n=0}^{\infty} (q_n + X_n) \mathcal{J}_n(u) \quad . \quad (53)$$

where

$$\begin{aligned} \mathcal{I}_n(u) &= \int_u^\pi \frac{P_n(\cos \alpha) \sin \alpha}{\sqrt{\cos u - \cos \alpha}} d\alpha \\ \mathcal{J}_n(u) &= \int_u^\pi \frac{P_n(\cos \alpha) \sin \alpha}{[\cosh \beta_0 - \cos \alpha] \sqrt{\cos u - \cos \alpha}} d\alpha \quad . \end{aligned} \quad (54)$$

The above integrals can be solved by introducing the following identity [16]

$$\sqrt{2} \sum_{n=0}^{\infty} \cos \left[\left(n + \frac{1}{2} \right) u \right] P_n(\cos \alpha) = \frac{\Theta(\alpha - u)}{\sqrt{\cos u - \cos \alpha}} \quad . \quad (55)$$

The integral $\mathcal{I}_n(u)$ can be easily evaluated by using Eq. (55) and recalling the orthonormality condition of Legendre polynomials. We get

$$\begin{aligned} \mathcal{I}_n(u) &= \sqrt{2} \sum_{m=0}^{\infty} \cos \left[\left(m + \frac{1}{2} \right) u \right] I_{nm} \\ &= \frac{2\sqrt{2}}{2n+1} \cos \left[\left(n + \frac{1}{2} \right) u \right] \quad . \end{aligned} \quad (56)$$

Insertion of the identity (55) in the definition of $\mathcal{J}_n(u)$ gives

$$\mathcal{J}_n(u) = 2\sqrt{2} \sum_{m=0}^{\infty} \cos \left[\left(m + \frac{1}{2} \right) u \right] \Gamma_{nm} \quad (57)$$

with

$$\Gamma_{nm} = \frac{1}{2} \int_0^\pi \frac{P_n(\cos \alpha) P_m(\cos \alpha) \sin \alpha}{\cosh \beta_0 - \cos \alpha} d\alpha \quad . \quad (58)$$

The integral in Eq. (58) can be solved by using formula (7.224.5) from Ref. [19]. The result is Eq. (42). Then, insertion of Eq. (53) in Eq. (38) leads to the calculation of two integrals of the type

$$\int_{\alpha_0}^\pi \cos \left[\left(p + \frac{1}{2} \right) u \right] \cos \left[\left(q + \frac{1}{2} \right) u \right] du = \frac{\pi}{2} S_{pq} \quad (59)$$

with S_{pq} defined as from Eq. (41).

Taking into account expressions (53) and (59), it is a simple matter of algebraic rearrangement to put Eq. (38) in the form of the infinite set of equations (40).

As a check of consistency, we observe that the case of entirely absorbing Fabs may be easily recovered. In this case one has $S_{mn} = M_{mn} = 0 \forall m, n$, and hence $X_n = 0 \forall n$. Consequently, Eq. (35) reduces to Eq. (24), and the solution (25) is recovered along with the rate constant (26) (see also Eq. (43)). On the other hand, the solution to the Laplace problem must vanish in the limit $\alpha_0 \rightarrow 0$, where the two Fabs become entirely reflecting. In this case one has $S_{mn} \rightarrow \delta_{mn}$, and hence the problem reduces to solving the following infinite homogeneous system in the variables $X_n + q_n$ (see Eq. (35))

$$\sum_{m=0}^{\infty} \Xi_{nm}(X_m + q_m) = \sum_{m=0}^{\infty} [\delta_{nm} - M_{nm}](X_m + q_m) = 0 \quad (60)$$

whose only solution is the trivial one $X_n + q_n = 0 \forall n$, being $\det(\Xi) \neq 0$ at each order of truncation (which can easily be proved numerically to be the case). This proves that the solution to the Laplace problem is indeed the trivial one, and that the rate constant vanishes (see also Eq. (43)).

C

In this appendix we discuss into some detail the convergence properties associated with truncation of the infinite set of equations (40).

If we indicate with $N_t(\theta_0, \chi)$ the number of equations retained in the infinite system (40) for a given choice of the parameters (θ_0, χ) within the intervals of interest, we find that a relative error $\delta X_n/X_n < 0.1\% \forall n$ may be obtained by keeping in the worst case up to order $N_t = 100$ equations. In the calculation of the norm of M , the sum in the definition (41) has been truncated at a fixed number of terms N^* , independent of N . To understand whether that is legitimate, let us consider that term in more detail. Since $|S_{mn}| < 1 \forall m, n$, we have

$$\begin{aligned} \left| \sqrt{\chi^2 - 1} \sum_{m=0}^{N_t} \sum_{k=0}^{N^*} \Gamma_{mk} S_{kn} \right| &< \sqrt{\chi^2 - 1} \sum_{m=0}^{N_t} \left| \sum_{k=0}^{N^*} \Gamma_{mk} \right| \\ &< \sqrt{\chi^2 - 1} \sum_{m=0}^{N_t} \left| \sum_{k=0}^{N^*} \Gamma_{mk} \right| \stackrel{\text{def}}{=} \gamma(N^*) \quad . \quad (61) \end{aligned}$$

The quantity $\gamma(N^*)$ is plotted in Fig. 9 for three values of the parameter χ , with two choices of the truncation order N_t each. It is very clear that such indicator converges rapidly for all values of χ . The plot confirms that the correct value of N^* in order to assure convergence increases with the order of truncation N_t . In particular, we have $N^* \approx N_t$. Hence, the greater precision we require in the numerical solution for the coefficients X_n , the greater must be N_t , and consequently the greater N^* . Operatively, we can thus safely require the specified accuracy to give the rules for both truncations.

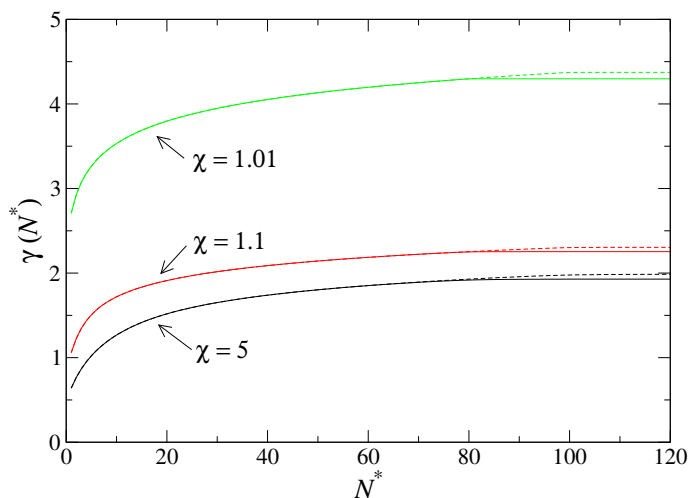


Figure 9 Plot of $\gamma(N^*)$. Solid lines, $N_t = 80$. Dashed lines, $N_t = 100$

References

1. Sandin, S., Öfverstedt, L.-G., Wikström, A.-C., Wrangé, Ö & Skoglund, U. *Structure* **12**(3) (2004) 409.
2. D. Voet, J. G. Voet, *Biochemistry* J. Wiley & sons (1995) New York.
3. L. Bongini, D. Fanelli, F. Piazza, P. De Los Rios, U. Skoglund, in preparation.
4. L. Bongini, D. Fanelli, F. Piazza, P. De Los Rios, S. Sandin, U. Skoglund, *PNAS* **101**, (2004) 6466.
5. M. v. Smoluchowski, *Phys. Z.* **17** (1916) 557; *Z. Phys. Chem.* **92** (1917) 129.
6. S. Tanimoto, H. Kitano, *Langmuir* **9** (1993) 1315.
7. H. Kitano, S. Iwai, T. Okubo, N. Ise, *J. Am. Chem. Soc.* **109** (1987) 7608.
8. S. A. Levison, A. N. Jancsi, W. B. Dandliker *Biochem. Biophys. Res. Commun.* **33** (1968) 942.
9. R. W. Noble, M. Reichlin, Q. H. Gibson, *J. Biol. Chem.* **244** (1969) 2403.
10. G. A. Loset, K. H. Roux, P. Zhu, T. E. Michaelsen and I. Sandle, *J. Imm.* **172** (2004) 2925.
11. For a review see e. g. A. V. Barzykin, A. I. Shushin, *Biophys. J.* **80** (2001) 2062.
12. M. J. Potter, B. Luty, H. X. Zhou, J.A. McCammon, *J. Phys. Chem.* **100**(12) (1996) 5149.
13. Y. H. Song, Y. J. Zhang, T. Y. Shen, C. L. Bajaj, A. McCammon, N. A. Baker *Biophys. J.* **86**(4) (2004) 2017.
14. S. D. Traytak, *Chem. Phys.* **192** (1995) 1.
15. P. M. Morse, H. Feshbach, *Methods of theoretical physics* Mc Graw-Hill (1953) New York.
16. I. N. Sneddon, *Mixed boundary value problems in potential theory*, North-Holland (1966) Amsterdam.
17. J. C. Almagro, *J. Mol. Rec.* **17** (2004) 132.
18. R. M. MacCallum, A. C. R. Martin, J. M. Thornton, *J. Mol. Biol.* **262** (1996) 732.
19. I. S. Gradshteyn, I. M. Ryzhik, *Table of Integrals, Series and Products* Academic Press (1980) London.